

Our ref: Pentewan desilt
Date: 17 November 2020

Dear Sir/Madam,

Reducing the chance of flooding at Pentewan -Revised access date

Following an unexpected delay the Environment Agency will be starting the planned desilting work from 23 November 2020. The details of the works are unchanged but included below for your information.

The Environment Agency has allocated funding and planned maintenance activities to reduce your local flood risk at Pentewan.

You will notice some desilting activity around the Harbour area this autumn.

Bridge Civil Engineering Ltd will be commencing work on behalf of the Environment Agency from 23 November 2020. The work is expected to take two weeks, weather permitting. The works have been scheduled to avoid the peak tourist season.

Specialist equipment will be placed in the culvert that runs into the old Pentewan Harbour to force silt out. The material will then be placed in a storage area indicated on the enclosed drawing. This will allow organisms in the material to return to the water and the material to drain and dry before removal from site by lorries. We estimate the drying period will take six weeks, weather dependent. The number of lorry movements is not clear at the moment. This will depend on the quantity of material removed.

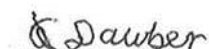
Please keep the area by The Square and The Quay free of parked cars, especially where access into the site compound is shown by the green line on the enclosed drawing. This will help allow the efficient removal of silt by lorry and assist this important work.

The compound area will be cordoned off with temporary fencing to ensure public safety. The map enclosed shows the access routes, compound, material drainage area and working area for your information.

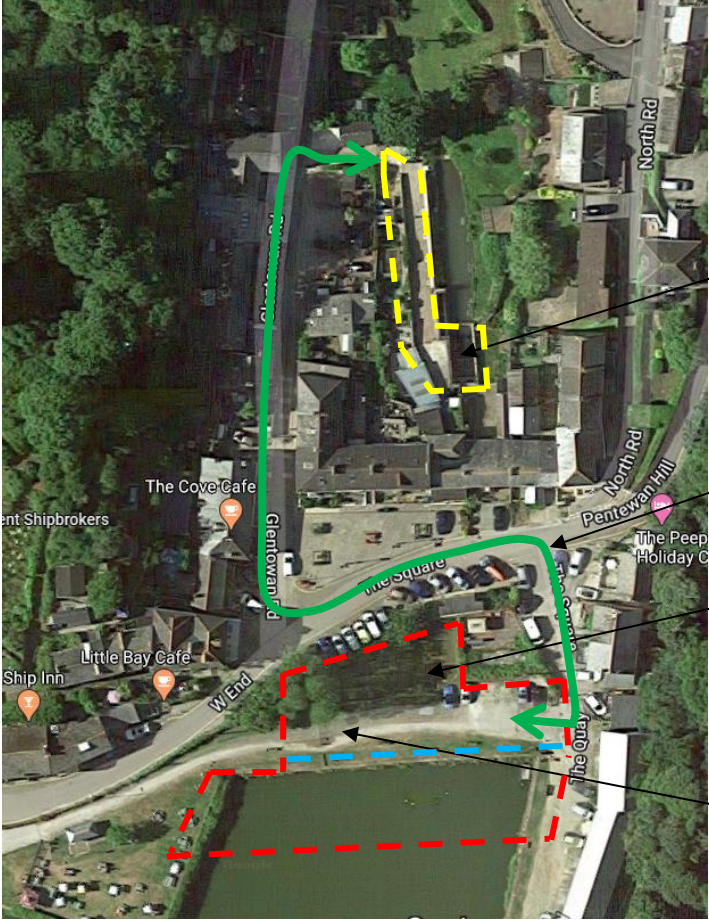
The health and safety of our staff, partners and the communities we work in remains a priority for the Environment Agency during the Coronavirus pandemic. We are following the latest guidance from Public Health England, regarding safe working on construction sites.

If you have any queries please contact Phillip Alliston of Ardent 07513 126031,
phillipalliston@ardent-management.com

Yours faithfully,



Christina Dawber
 Flood and Coastal Risk Management Officer
 Asset Performance Team | Devon, Cornwall and the Isles of Scilly
 Plan of work area and access



KEY	
Site Compound	---
Site Boundary/Fencing	- - - -
Plant exclusion zone/demarcation	- . - . - .
Access Routes	↔

Working Area

Vehicular Access Routes

Site Compound

Material Drainage area